

SITE AREA: 4782sqm

PUBLIC OPEN SPACE: 351sqm
(Exclusive of pathway and boundary landscaping)

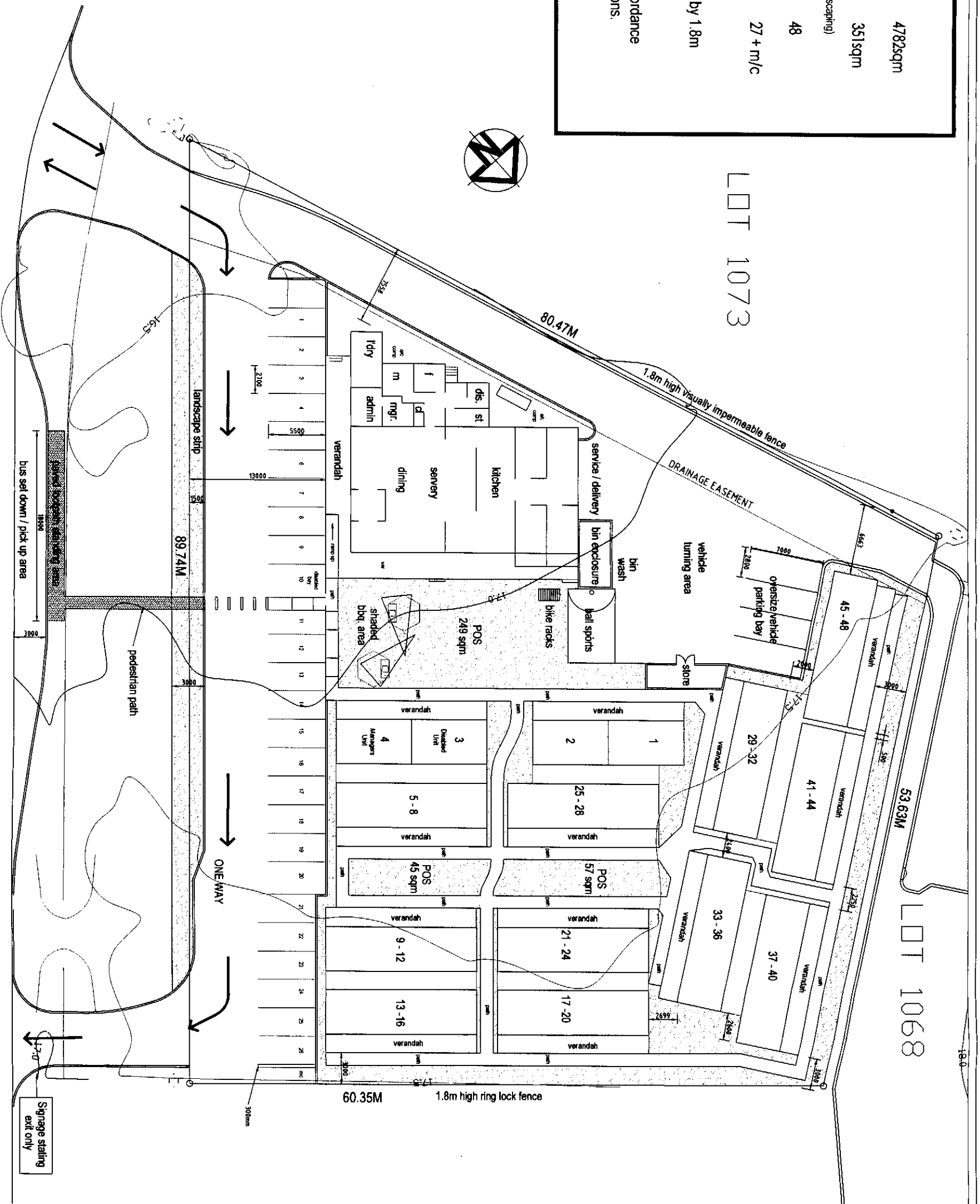
UNITS: 48

PARKING BAYS: 27 + m/c
(including one disabled bay)

- Service area to be screened by 1.8m visually impermeable fence.

- Ramp gradients to be in accordance with disability access provisions.

LOT 1073



site plan

KARATHA ACCOMMODATION VILLAGE
LOT 1072 CHERRAIA ROAD

RECEIVED
20 JAN 2010

LOT 1071



77 Thomas Street
Suite 101, 4000 Brisbane
Ph: 3361 5577 Fax: 3361 6888
Email: info@townplanning.com.au
ALSA 31/3/2009 SCS

MASTER PLAN
TOWN PLANNING
CONSULTANTS

scale @ A3 1:400
ref: ALKA - DA 29.10.09
mwhd: LKJ, NO

apoc
Australian Association of
Planning Consultants

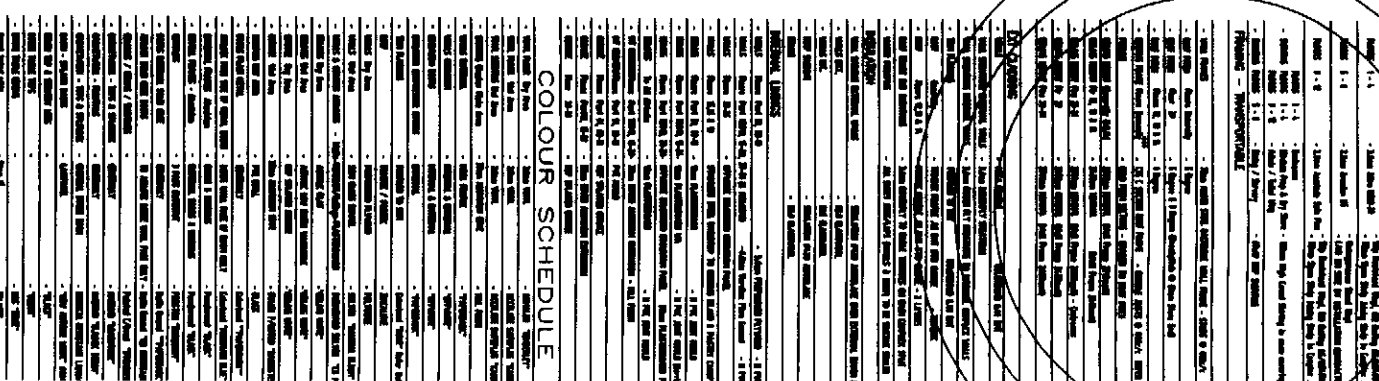
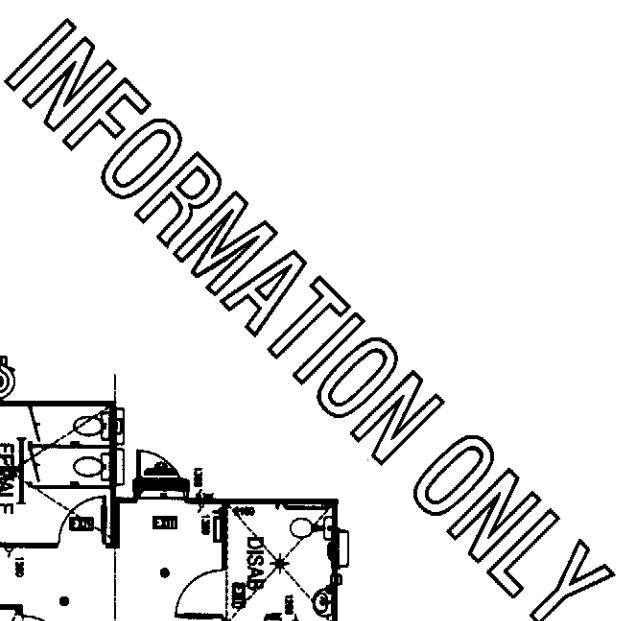
SHORT SPECIFICATION

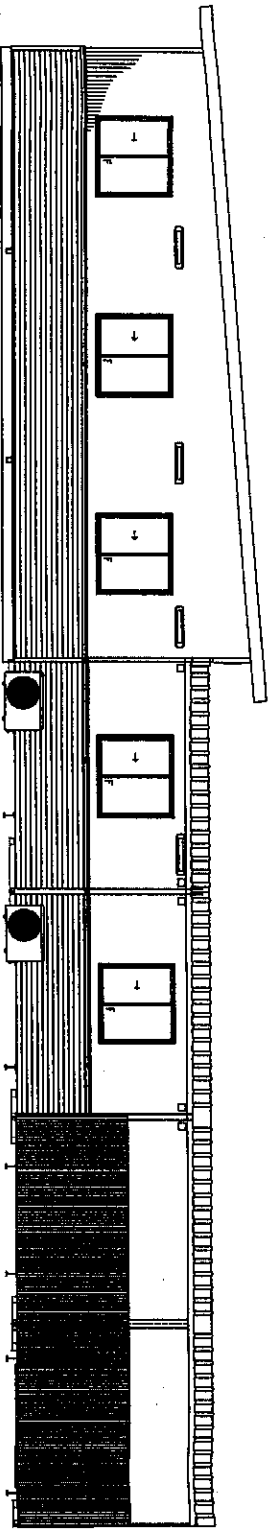
[illegible][illegible][illegible]

79 JAN 1967

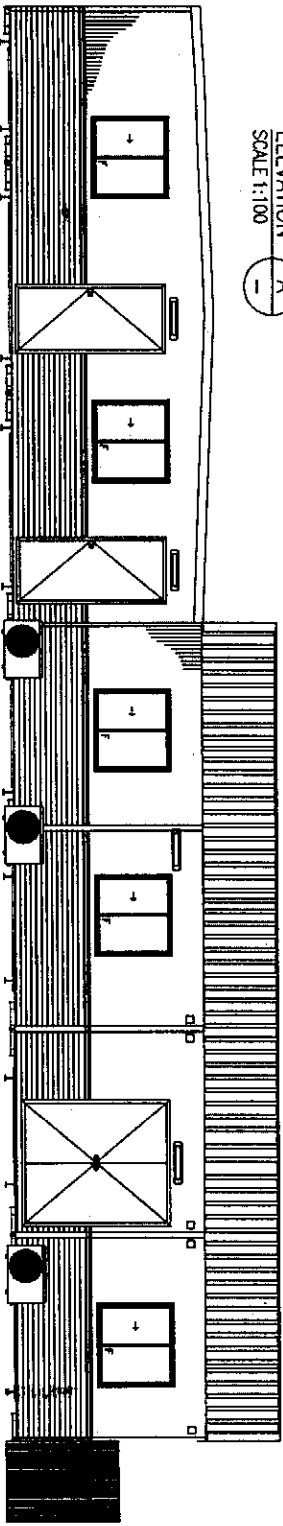
CHERITA VI
LORD 1072 C
MONTANA
WINDY/STARY
CENTRAL FAC
CHERITA VI

12271

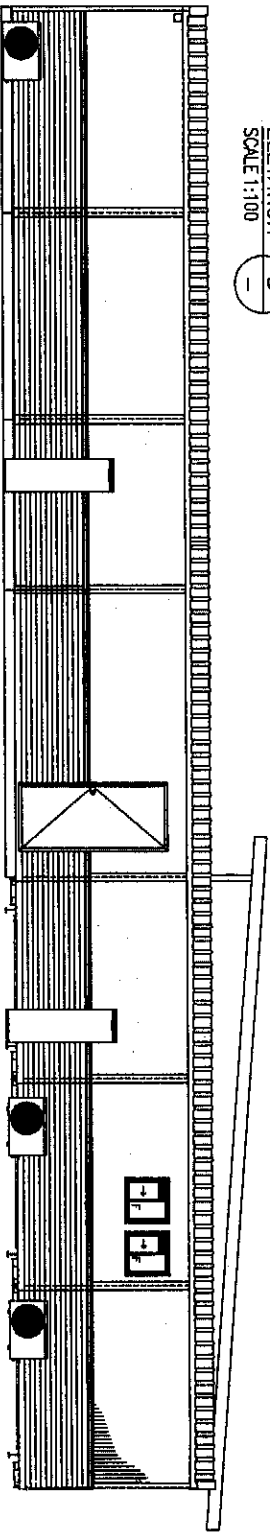




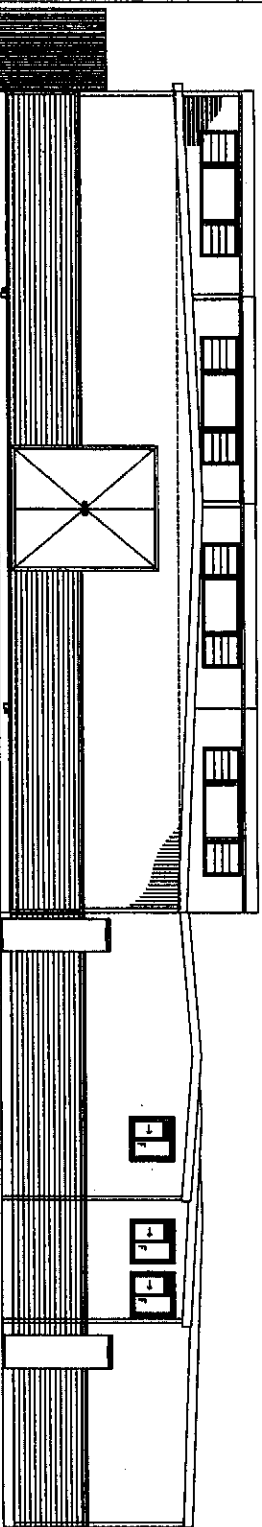
ELEVATION A
SCALE 1:100



ELEVATION B
SCALE 1:100



ELEVATION C
SCALE 1:100



ELEVATION D
SCALE 1:100

INFORMATION ONLY

AUSCO		MODULAR	
COPYRIGHT AUSCO MODULAR PTY LTD MAY NOT BE REPRODUCED OR ITS CONTENTS MANIPULATED WITHOUT WRITTEN AUTHORITY			
CHERRAITA VILLAGE KARRATHA			
CENTRAL FACILITY BUILDING			
KITCHEN/DINER/ADMIN/LAUNDRY/TOILETS			
LOT 1072 CHERRAITA ROAD			
KARRATHA			
CHERRAITA VILLAGE DEVELOPMENTS			
Drawn By	Drawn Date	Scale	Drawn
mol/c	28.12.09	1:100	A3
Checked By	Check Date	DIMENSIONS ARE IN MM	
John Zander	31.12.09	DO NOT SCALE	
Project No.	12271	Order No.	12271-001
Doc No.	12271-P01	Sheet	2 of 3
		Drawn	A

